

**Espay Solar Energy S.L.**

# **Wind power station system**



## Overview

---

A wind power station, often known as a wind farm, is a facility that converts wind energy into electricity. These stations are usually made up of many wind turbines strategically located in places with strong and continuous wind currents, such as coastal regions, plains, or. Wind power is the use of wind energy to generate useful work. Today, wind power is generated almost. Wind turbines work on a simple principle: instead of using electricity to make wind—like a fan—wind turbines use wind to make electricity. But what precisely are wind power plants, and how do they operate?

Let's take a closer look at how wind power stations work.

## Wind power station system

---



### Wind Power Station

Wind power stations are facilities that generate electricity by harnessing wind energy through the use of wind turbines, as evidenced by the increasing capacity of such stations in various regions, including ...

---

### How Do Wind Turbines Work?

Wind turbines work on a simple principle: instead of using electricity to make wind--like a fan--wind turbines use wind to make electricity. Wind turns the propeller-like blades of a turbine around a rotor, ...



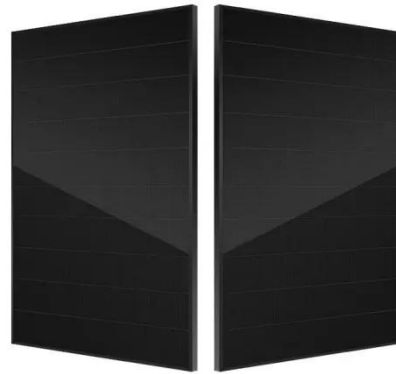
### Wind Power Plant

A wind power plant is used to reduce the power deficit in a network. The electric power generated from the wind power plant varies with variations in wind velocity.

---

### Wind Power Plant

What Is A Wind Power Plant? Classification of Wind Turbine Performance of Wind Turbines Site Selection of Wind Power Plant Schemes of Electric Generation Generators Used in Wind Power Plants Advantages & Disadvantages of Wind Power Plant A wind power plant is also known as a wind farm or wind turbine. A wind power plant is a renewable source of electrical energy. The wind turbine is designed to use the speed and power of wind and convert it into electrical energy. The wind power plant is widely used in the entire world. Because the wind is the best natural source that available in See more on electrical technology Repsol



## Wind farms: How they work, types, and advantages

We tell you about how wind farms work, the different types there currently are, and their main advantages.



### How Do Wind Power Stations Work? A Detailed Look Inside

A wind power station, often known as a wind farm, is a facility that converts wind energy into electricity. These stations are usually made up of many wind turbines strategically located in ...

## Wind Energy Systems: How It's

## Work, Types, ...

Wind energy systems convert wind's kinetic energy into electricity, crucial for sustainable energy. Discover the types, benefits, and challenges.



---

## Wind Power Plant: Diagram, Parts, Working & Advantages



In this post, you will learn about the wind power plant and its diagram, working, the importance of wind energy, advantages, application and more. Also, you can download the PDF file ...

---

## How Does Wind Energy Work: Complete Guide To Wind Power 2025

Modern wind turbines are marvels of engineering that efficiently capture the kinetic energy of moving air and transform it into usable electrical power through a carefully orchestrated ...



---

## Wind farms: How they work, types, and advantages , Repsol

We tell you about how wind farms work, the different types there currently are, and their main advantages.



---

## Wind power , Description, Renewable Energy, Uses, Disadvantages

Modern commercial wind turbines produce electricity by using rotational energy to drive an electrical generator. They are made up of one or more blades attached to a rotor and an ...



---

## Contact Us

For catalog requests, pricing, or partnerships, please visit:  
<https://espay.es>

