

Espay Solar Energy S.L.

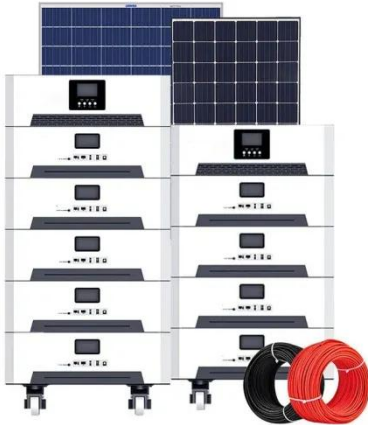
Why can't photovoltaic panels be installed on forest land



Overview

The installation of solar panels in forested areas inevitably involves the alteration of the natural environment. By examining ecological impacts, technical challenges, and the perspectives of local communities, this exploration strives to find a balance between energy generation and environmental. This report provides a rapid assessment of potential conversions of forests to solar facilities. US climate. While forests are invaluable for carbon sequestration and biodiversity, the claim that cutting down trees for solar panel installation negates climate benefits is misleading. Credit: Penn State MCOR As energy transitions are occurring across the nation, the conversion of land, mainly in rural.

Why can't photovoltaic panels be installed on forest land



Are We Sacrificing Our Forests for Solar? , EnergySage

To protect these spaces, we can intentionally install solar panels in locations that have a low environmental impact. In Massachusetts, a recent study revealed there are plenty of low impact ...

Solar Panels in Wooded Areas: Opportunities & Challenges

These case studies provide real-world examples that illustrate not only the feasibility but also the benefits and challenges of solar panel installation in forested areas.



Clearing forests to erect solar panels may not be clean-energy ...

Beyond the beautiful green canopies they provide, forests are a critical, natural carbon sink, and the clean energy transition can't happen without them. "We need to think not only about ...

Only about 4% of US solar projects

are located on forested land, and

While forests are invaluable for carbon sequestration and biodiversity, the claim that cutting down trees for solar panel installation negates climate benefits is misleading.



Land Conversion Issues with Grid-Scale Solar Development

Private forest land has been broken into smaller and smaller parcels in the Mid-Atlantic over the last several centuries. These smaller parcels often lose their full ecological function as they ...

Converting Forests to Solar Facilities: Causes, Potential, and ...

Rising public alarm regarding solar siting, initially focused on agricultural land, portends challenges for land-based sectors and the clean energy transition. This report provides a rapid ...



The Impact and Benefits of Installing Solar Panels in Forest Areas

The installation of solar panels in forested areas inevitably involves the alteration of the natural environment.

Applications



The clearing of trees and vegetation is a major concern, as it can lead to the ...

Revisiting the land use conflicts between forests and solar farms

Here, we evaluated land-use conflicts between forests and established solar farms worldwide, and further assessed the energy efficiency effect of placing solar farms over forests using ...



Can You Really Install Photovoltaic Panels in Forest Land? Here's the

A 2023 Stanford study revealed something shocking: strategically placed solar panels in managed forests can increase overall energy production by 18% compared to open-field installations.

Conservation Considerations for Solar Farms

Solar panels can significantly affect ecohydrology by redistributing moisture from precipitation and casting a

significant amount of shade. Account for potential threats from noxious and invasive ...



Contact Us

For catalog requests, pricing, or partnerships, please visit:
<https://espay.es>

