

**Espay Solar Energy S.L.**

# **Where to build wind power generation**



## Overview

---

Discover what are the best locations for installing wind turbines and how they can transform energy landscapes! Wind energy has emerged as a vital component of the global shift towards renewable energy sources. As installations have increased, capacity has grown at an average rate of 28% per year from 1995 to 2012, and 14% per year from 2013 to. Wind power or wind energy is a form of renewable energy that harnesses the power of the wind to generate electricity. It involves using wind turbines to convert the turning motion of blades, pushed by moving air (kinetic energy) into electrical energy (electricity). Modern wind turbines are.

## Where to build wind power generation

---



### What Are the Best Locations for Installing Wind Turbines?

When evaluating suitable sites for wind turbine installation, several locations stand out due to their natural wind patterns and geographical features. This section explores three of the most ...

### 1.2 A Wind Project: Step by Step , One Power Company

As One Power builds new access roads, foundations, electrical systems, and of course, wind turbines, we are happy to show your team every step of the construction process.



### Shanghai Fengxian

The project is part of China's efforts to expand its renewable energy capacity, particularly in offshore wind power. It aligns with national goals to reduce carbon emissions and increase the share of ...

### 10 Steps to Developing a Wind Farm

10 Steps in Building a Wind Farm 1. Understand Your Wind Resource The most important factor to consider in the construction of a wind energy facility is the site's wind resource. A site must have a ...

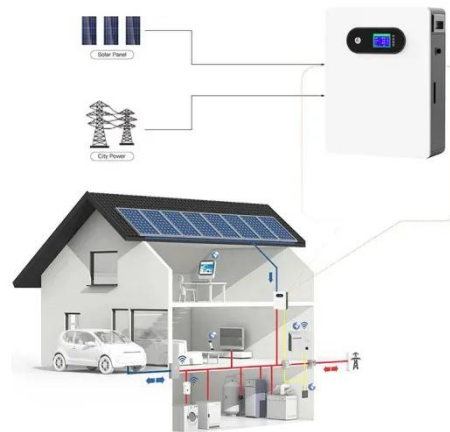


### How to Select Location for a Wind Farm and Make Electricity

The crucial factor in siting a wind farm (also called wind park or wind plant) is the annual energy production and how the value of the energy produced compares to other sources of energy.

### Energy Technologies and Siting Considerations: Wind Energy

As part of the NACo's series on county considerations for siting energy projects, this primer provides a plain-language overview of wind energy technology and serves as a foundational ...



### Global Wind Atlas

The Global Wind Atlas is a free, web-based application developed to help policymakers, planners, and investors identify high-wind areas for wind power



generation virtually anywhere in the world, and then ...

### Wind explained Where wind power is harnessed

Operating a wind power plant is more complex than simply erecting wind turbines in a windy area. Wind power plant owners carefully plan where to position wind turbines and consider ...



### Wind Energy , Department of Energy

This includes offshore wind's potential to provide power to population centers near coastlines, and land-based wind's ability to deliver electricity to rural communities and islands with ...



## Contact Us

For catalog requests, pricing, or partnerships, please visit:  
<https://espay.es>

