

**Espay Solar Energy S.L.**

# What is the slope distance of the photovoltaic panel



 **TAX FREE**

**1-3MWh**  
**BESS**



## Overview

---

Free calculator online of the slope or pitch of a roof or photovoltaic solar panels. Use the length and rise of the roof to find the slope, or enter the slope and the run length to get the tilted length. In photovoltaic system design, the spacing between solar panels is a key factor that directly affects system performance, including light reception, heat dissipation, and maintenance convenience. Proper panel spacing not only enhances energy efficiency but also extends the system's lifespan. To do that, follow this calculation below:  $\text{Height Difference} = \sin(\text{Tilt Angle}) \times \text{Module Width}$  \*\*\*Make sure you're calculating in degrees, not. For this purpose, the distances of the rows from each other are determined using the calculations for the angle of incidence of solar radiation for December 23, when the sun is lowest above the horizon. The selection of this distance is closely related to our geographical location, as well as the. Base slope effect describes the phenomenon observed in solar panels that are installed on sloping terrain. This refers to how the inclination of the ground influences the positioning and performance of the panels.

## What is the slope distance of the photovoltaic panel



### How to Calculate Solar Panel Row Spacing for Maximum Efficiency

To take the guesswork out, we've built a Solar Panel Row Spacing Calculator. Enter your site's latitude, tilt, and azimuth, and it will calculate the minimum spacing needed to avoid shading at ...

### Determning Module Inter-Row Spacing , Greentech Renewables

When designing a PV system that is tilted or ground mounted, determining the appropriate spacing between each row can be troublesome or a downright migraine in the making. However, it is ...



### Slope, pitch, gradient of a roof or solar panels (calculator and formula)

Free calculator online of the slope or pitch of a roof or photovoltaic solar panels. Use the length and rise of the roof to find the slope, or enter the slope and the run length to get the tilted length.

## Calculation of the spacing between photovoltaic panels

For that reason the ideal angle is never fixed. To get the most sun reaching the panel throughout the day, you need to determine what direction the panels should face and



## Roof Pitch for Solar Panels Calculator

For most residential properties, a roof with a slope between  $30^{\circ}$  and  $40^{\circ}$  is considered optimal for solar panel installation. This angle allows solar panels to lie flat against the roof without requiring additional ...

## Shade Calculator

Knowing the minimum angle of incidence of sunlight during the year, it is possible to determine the distance between successive rows of photovoltaic panels. The figure below shows the schematic ...



## How to Calculate the Minimum Distance Between PV Panels?

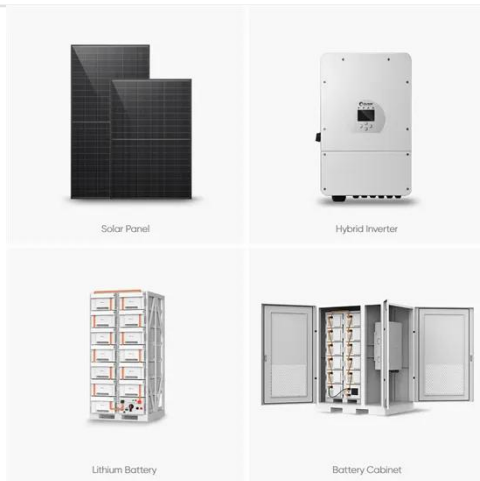
Understand the importance of minimum installation distance for solar panels, calculation methods, and relevant

regulations to ensure efficient operation and compliance of solar energy ...



## Photovoltaic Array Row Spacing Calculator

The row spacing of a photovoltaic array is the distance between the front and rear rows of solar panels. This spacing is calculated to ensure that the rear panels are not shaded by the front panels, ...



## How to Measure Roof Pitch for Solar Panels

Here are instructions to measure the roof pitch or slope for solar panels. The pitch will impact the amount of tilt toward the Sun for the PV array. Most arrays are flush-mounted, meaning they follow ...

## Contact Us

For catalog requests, pricing, or partnerships, please visit:  
<https://espay.es>

