

Espay Solar Energy S.L.

What does bifacial solar module mean



What does bifacial solar module mean



Bifacial Solar Panel Installation Best Practices , Dual-Sided Solar

Bifacial solar panels represent one of the most significant advances in photovoltaic technology. These innovative modules capture sunlight from both sides, potentially boosting energy production by 10 ...

Bifacial Solar Panels: Design, Efficiency & Use Cases

What Are Bifacial Solar Panels? Bifacial solar panels produce energy from both the front and rear sides of the panel. Traditional monofacial panels, however, boast a backsheet that is opaque and can receive ...



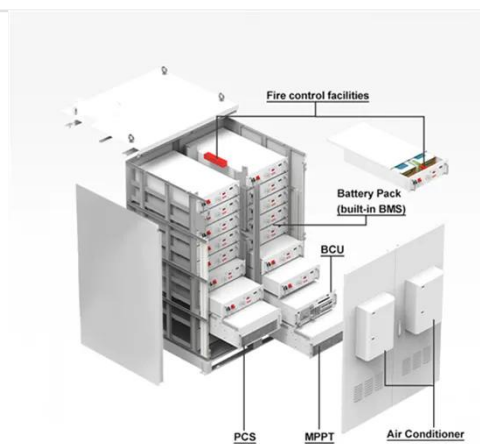
Everything You Need To Know About Bifacial Solar Panels

By utilizing more of the available surface area for electricity generation, bifacial solar panels can produce more power from ambient sunlight than a conventional monofacial PV module.

What Are Bifacial Solar Panels And

Why Do They Matter?

Bifacial solar panels differ from traditional panels because they are designed to absorb sunlight on both sides. This means they can capture both direct sunlight as well as reflected light from the ground or ...

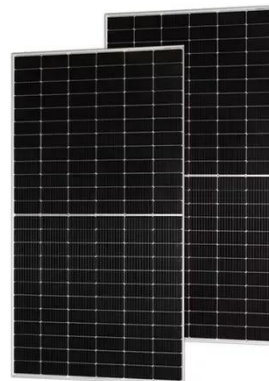


What Are Bifacial Solar Panels? Overview, How They ...

Bifacial solar panels generate solar power from both direct sunlight and reflected light (albedo), which means they are essentially double-sided panels.

Complete Guide To Bifacial Solar Panel Installation (2025)

Master bifacial solar panel installation with our comprehensive guide. Learn optimal mounting, spacing, and design techniques to maximize energy output. Expert tips included.



Bifacial solar panels: What you need to know

Bifacial solar panels can capture light energy on both sides of the ...



Bifacial modules , Solamp Solar & Energy Storage

Bifacial solar modules are a type of photovoltaic (PV) panel designed to capture sunlight and generate electricity from both sides - the front and the back. This is in contrast to traditional monofacial ...



Bifacial solar panels: What you need to know

Bifacial solar panels can capture light energy on both sides of the panel, whereas monofacial panels (AKA traditional solar panels) only absorb sunlight on the front. Bifacial solar panels are not suitable ...

What Is a Bifacial Solar Panel? How Does It Work?

What Is a Bifacial Solar Panel? Bifacial

solar panels are photovoltaic panels that capture sunlight from both the front and back sides.

**ESS**

Deye Digital & Smart Energy Management Platform

Cycle Life
≥ 6000

Bifacial Solar Panels: What You Need To Know - Forbes Home

What Are Bifacial Solar Panels? Bifacial solar panels represent an innovation in the realm of solar technology, uniquely crafted to harness sunlight from both their front and back

Contact Us

For catalog requests, pricing, or partnerships, please visit:
<https://espay.es>

