

Espay Solar Energy S.L.

Uwb base station range outdoor



Uwb base station range outdoor



UniFi WiFi BaseStation XG Datasheet

For ultra high density environments, such as an outdoor music festival, where there are numerous clients in a relatively small space, we recommend the UniFi WiFi BaseStation XG.

WiFi BaseStation XG

Tri-radio WiFi 5 AP with 12 spatial streams and a selectable beamforming antenna, designed for high-density applications at large venues.



Ubiquiti UWB-XG-US , UniFi WiFi BaseStation XG , Tri-Radio 5 GHz ...

The Ubiquiti UWB-XG-US UniFi WiFi BaseStation XG is a high-capacity, tri-radio access point designed for high-density environments such as large venues and public spaces. Featuring 12

...

UWB-XG Beam Forming BaseStation

1500 by Ubiquiti Networks

The UWB-XG UniFi WiFi BaseStation XG delivers unprecedented wireless awareness and security, including tools for real-time spectrum monitoring, airtime utilization analytics, and intrusion ...



UWB-XG WiFi BaseStation XG

WiFi 5 (5 GHz only) 12 spatial streams
 465+ m² (5,000+ ft²) open space coverage
 1,500+ connected devices
 Powered using PoE++ (1) GbE and (1) 10 GbE uplink
 Versatile wall and pole mounting ...

UWB Base Station Selection Guide: Choosing the Right Model for ...

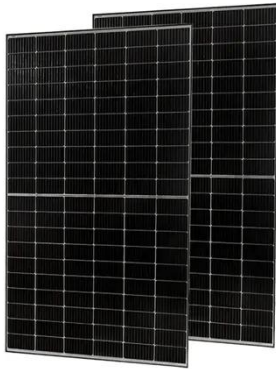
Some base stations have a shorter range and are better suited for small, indoor spaces, while others can cover large outdoor areas. Calculate the approximate coverage area and the ...



Ubiquiti UWB-XG UniFi BaseStation XG Outdoor Tri-Band 5GHz ...

For ultra high density environments, such as an outdoor music festival or stadium, where there are numerous clients in a relatively small space, we

recommend the UniFi WiFi BaseStation XG.



UniFi Wi-Fi BaseStation Quick Start Guide

We recommend that you protect your networks from harmful outdoor environments and destructive ESD events with industrial-grade, shielded Ethernet cable from Ubiquiti Networks.



UWB Outdoor Wireless Base Station WE-RA220-O

Angle-based AOA localization is the base station through the antenna array to measure the incident position of the wireless signal, which is used to calculate the angle between the tag and the base ...

Contact Us

For catalog requests, pricing, or partnerships, please visit:
<https://espay.es>

