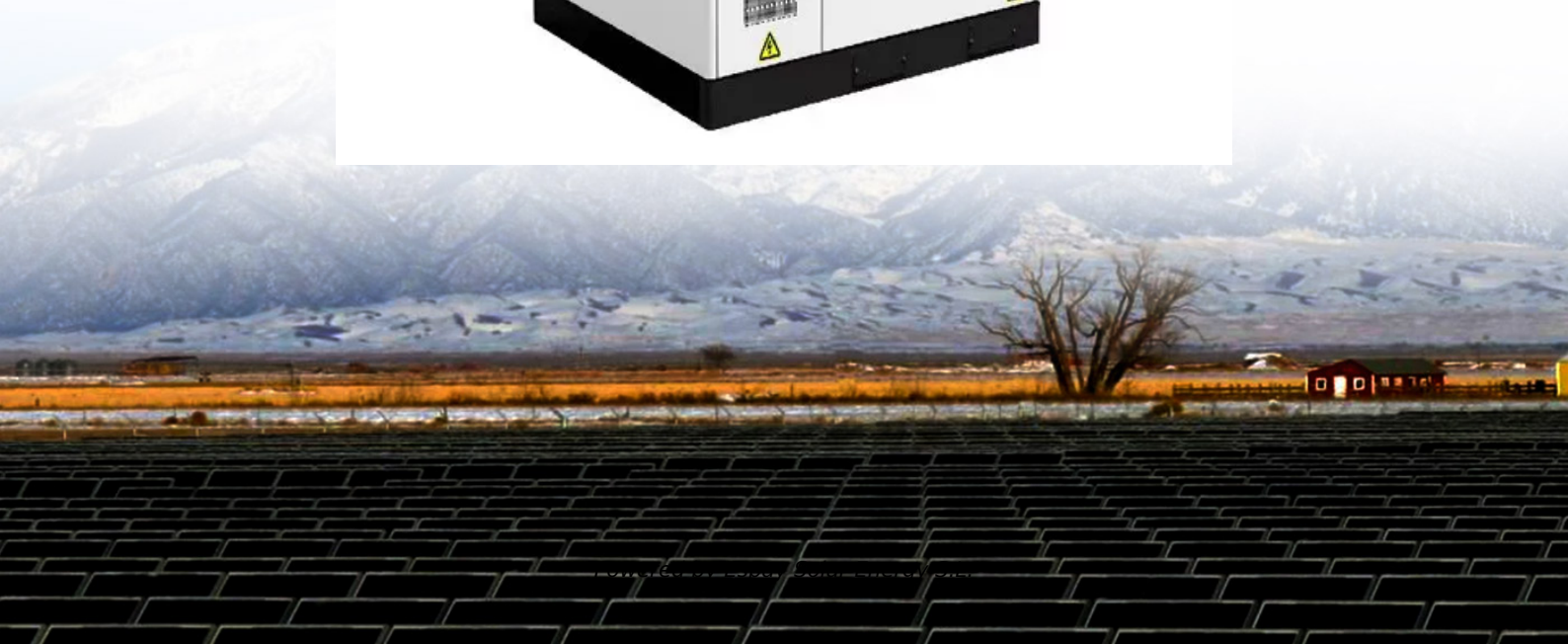


**Espay Solar Energy S.L.**

# **The photovoltaic panel controller does not display at night**



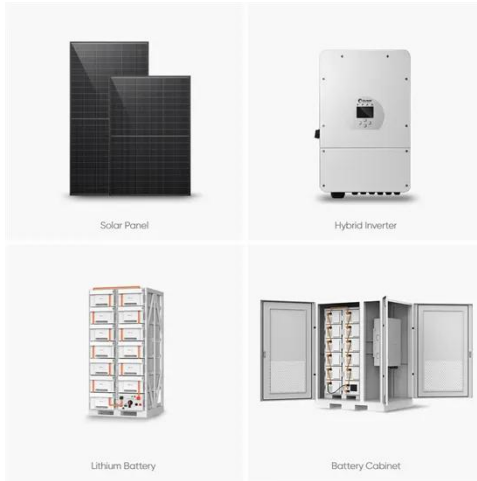
## Overview

---

Check for heavy cloud cover, bad weather and make sure it is not night time. Mechanical or electrical issues with one or more PV modules in the array. I noticed that my MPPT 60A EPEVER charge controller has displaying "night mode" symbol on the LCD display for some days, also the solar panel icon on the charge controller is blank with no blinking on it. It has been on the night mode for about 3days now, both during peak sunny time and night. My cables are connected plus to plus, minus to minus. In the middle of the full sun day, the controller shows "Night Mode. 7 volts and the. If your solar charge controller display is not working, it is possible that the unit is not receiving power, or some internal components could be damaged.

## The photovoltaic panel controller does not display at night

---



### Solar Controller Stuck in Night Mode? Expert

It seems that your solar controller is displaying a night mode icon even though your panels are producing power, and it has recently ceased sending power to the batteries.

---

### 5 Solar Charge Controller Problems (What Causes Them?) , Discover ...

These fluctuations can occur due to various factors such as inadequate sunlight exposure, loose connections, or even dirty solar panels. Troubleshooting power output issues may ...



---

### Solar Charge Controller Display Not Working? Here's How to ...

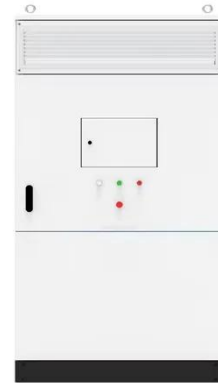
Troubleshoot your solar charge controller display not working with our step-by-step guide. Learn expert tips to resolve common issues efficiently.



---

### Why Is My Solar Charge Controller Cutting Off Power at Night?

Solar charge controllers typically cut off power at night due to low battery voltage, faulty panels, or improper system settings. These protective cutoffs help prevent over-discharge of the ...



### **Solar Controller Not Showing Display? Causes & Fixes , ZHCSolar**

Learn what to do when your solar charge controller display goes blank. Includes common causes and quick fixes.

### **60A MPPT EPEVER charge controller displaying "night mode"**

I noticed that my MPPT 60A EPEVER charge controller has displaying "night mode" symbol on the LCD display for some days, also the solar panel icon on the charge controller is blank ...



### **Solar Controller Not Showing Display? Causes & Fixes , ZHCSolar**

The Display Lines Is Broken and Need to Be Replaced  
No Solar Power Input  
Drained Battery  
Your Solar Charge Controller Is Dead  
If your solar controller screen is



blank, the first thing you should do is check the Screen Lines. Chances are, the lines have disconnected and the display simply can't power on. Reconnect or Replace the line and see if your display turns on. If not, proceed to the next step. See more on zhcsolar

## Videos of the Photovoltaic Panel Controller Does Not Display At Night

Watch video2:54Renogy: How to Troubleshoot Your Solar Panels Renogy40K viewsWatch video6:33HOW TO FIX ERRORS: Go Power! GP-PWM-10/30-SQ Digital Solar Controller Errors and Fixes Go Power! , Dometic24.8K viewsWatch video2:36How Your MPPT Charge Controllers React to Low Voltage , RICH SOLAR TALK RICH SOLAR28.4K viewsWatch full videoReddit

## Controller Stuck in Night Mode? : r/SolarDIY - Reddit

In the middle of the full sun day, the controller shows "Night Mode." The battery is at 12.7 volts and the PV panels put out specified voltage when tested (before plugged in).

---

## 6. Troubleshooting Guide

For unexpected behaviour or suspected product faults, refer to this chapter. Start by checking the common issues described here. If the problem persists, contact the point of purchase (Victron

dealer ...



## How to Reset Your Solar Controller

Learn how to reset your solar controller and troubleshoot problems with solar battery storage. Step by step guide from solar power specialists.

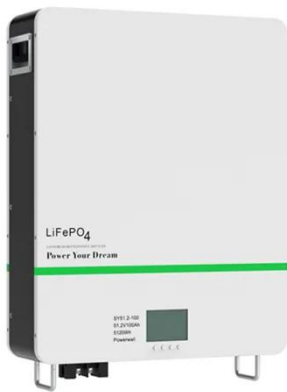
## Controller Stuck in Night Mode? : r/SolarDIY

In the middle of the full sun day, the controller shows "Night Mode." The battery is at 12.7 volts and the PV panels put out specified voltage when tested (before plugged in).



## MPPT Solar Charge Controller Troubleshooting Guide

Reset the controller and observe if the error persists.



---

## Contact Us

---

For catalog requests, pricing, or partnerships, please visit:  
<https://espay.es>

