

Espay Solar Energy S.L.

Suspended photovoltaic bracket installation specifications



Overview

Column specifications: 60mm diameter, 3mm thickness, 2m height. Rooftop. To ensure the smooth installation of photovoltaic system brackets and meet design requirements, Guidance Method For The Installation Of PV System Brackets are provided, including ground-mounted, rooftop, adjustable tilt angle, floating, Building-Integrated Photovoltaics (BIPV), bifacial, and. Photovoltaic bracket process standard s onent safety, design, installation, and monitoring. Standards are norms or requirements that establish a basis for the common understanding and judgment of materials, pro hat is no less than 10% smaller than the estimates. Are solar stack roof mounting systems ul 2703 listed?

Solar Stack Roof mounting systems are UL 2703 listed. Standard for safety UL/ANSI 2703,Mounting Systems,Mounting devices,Clamping/Rete. The roof type photovoltaic bracket is usually divided into two kinds of flat roof bracket and inclined roof bracket. PV Structures Models for Ground Mount Applications. The brackets are designed to securely hold the panels in place while allowing for proper air ci culation,which keeps the panels cool and operating effi ensuring the longevity and performance of a solar panel system. Solar panel. ar installation with our versatile Solar Panel Mounting Brackets. Common mounting methods inc ude roof attachm olications Contacts Renewable Energy Program Manager Rach ertter Bracket.

Suspended photovoltaic bracket installation specifications



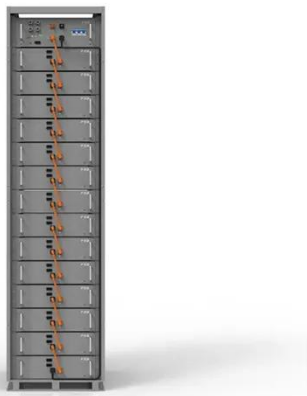
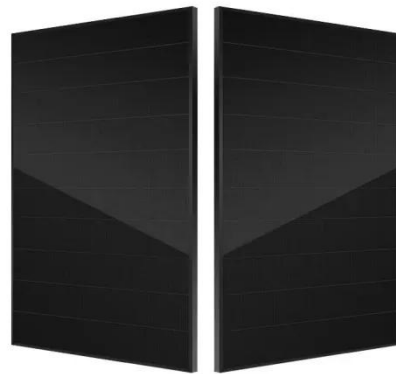
Display screen
Linux operation system
quad-core processors
smooth and stable system

Photovoltaic bracket process standard specification

The Federal Energy Management Program (FEMP) provides this tool to federal agencies seeking to procure solar photovoltaic (PV) systems with a customizable set of technical ...

The Ultimate Guide to Photovoltaic Bracket Square Steel Installation

Photovoltaic bracket square steel installation drawings serve as the GPS for solar mounting systems, combining structural engineering with practical field guidance.

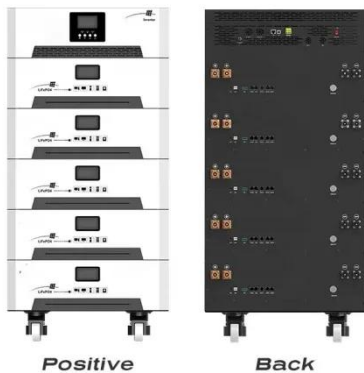


Photovoltaic bracket base specifications and models table

The roof type photovoltaic bracket is usually divided into two kinds of flat roof bracket and inclined roof bracket. Suspended photovoltaic bracket: usually installed at the bottom of buildings or

Guidance Method For The Installation Of PV System Brackets

By following these detailed guidelines, photovoltaic projects can ensure the successful installation and long-term performance of various types of photovoltaic system brackets.



Photovoltaic bracket installation specifications and dimensions table

Downstream activities are focused on the distribution and installation of PV brackets in solar projects. This includes the sales and logistics operations that ensure the

Basic specifications for photovoltaic power generation brackets

ensuring the longevity and performance of a solar panel system. Solar panel brackets are an important part of the installation process and should be installed by a professional. The brackets must be ...



Photovoltaic bracket roof installation specifications

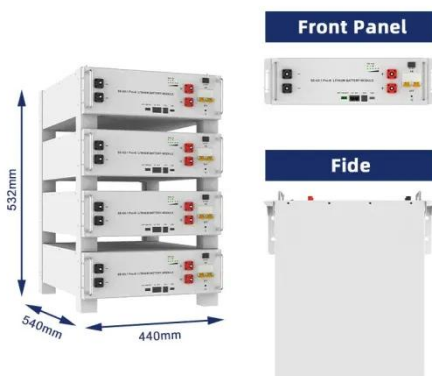
Since 2008, we have been the leaders in Italy in the field of photovoltaic panel fastening structures without drilling: with

our custom brackets, special adhesives, and anchoring systems, you can install ...



Photovoltaic bracket installation and construction specifications

Follow along with the essential steps of photovoltaic systems installation, from mounting solar modules and connecting to the grid, to commissioning and regular maintenance for optimal



Photovoltaic bracket hanger installation specifications

The PV module mounting system engineered to reduce installation costs and provide maximum strength for parallel-to-roof, tilt up, or open structure mounting applications.

Photovoltaic standard bracket installation requirements

There are standards for nearly every stage of the PV life cycle, including materials and processes used in the production of PV panels, testing

methodologies, performance standards,
and design and ...



- Efficient
Higher Revenue**
 - Max. Efficiency 97.5%
 - Max. PV Input Voltage 600V
 - 150% Peak Output Power
 - 2 MPPT Trackers, 150% DC Input Overvoltage
 - Max. PV Input Current 15A, Compatible with High Power Modules
- Intelligent
Simple O&M**
 - IP66 Protection Degree: support outdoor installation
 - Smart I-V Curve Diagnosis Function: locate PV string faults accurately and automatically detect faults
 - DC & AC Type II SPDs prevent lightning damage
 - Battery Reverse Connection Protection
- Flexible
Abundant Configuration**
 - Plug & Play, EPS Switching Under 15ms
 - Compatible with Lead-acid and Lithium Batteries
 - Max. 6 units Inverters Parallel
 - AFCC Function (Optional): when an arc fault is detected the inverter immediately stops operation

Contact Us

For catalog requests, pricing, or partnerships, please visit:
<https://espay.es>

