

Espay Solar Energy S.L.

Standard size diagram of photovoltaic embedded panels



Overview

Standard size diagram of photovoltaic embedded pane performance, safety and longevity of solar PV system. The sizing principles for grid connected and stand-alone PV systems are used on different design and functional requirements. Getting these dimensions right is the difference between an optimized, high-output system and a frustrating, inefficient. Example: 5kW solar system is comprised of 50 100-watt solar panels. Alright, your roof square footage is 1000 sq ft. Can you put a 5kW solar system on your roof?

For that, you will need to know what size is a typical 100-watt solar panel, right?

To bridge that gap of very useful knowledge needed. Standard Residential Panels Optimize Space and Handling: The industry-standard 60-cell panel dimensions (65" × 39" × 1. At 40-46 pounds, they can be safely handled by. Scalable and modular- Solar power products can be deployed in many sizes and configurations and can be installed on a building roof or acres of field; providing wide power-handling capabilities, from microwatts to megawatts. Peak Shaving -. The size of a solar panel is mainly determined by the number of cells, encapsulation method, and power rating. Currently, the most common monocrystalline modules on the market measure between 1.3 m in width, and about 30-40 mm in thickness.

Standard size diagram of photovoltaic embedded panels



Standard size diagram of photovoltaic embedded panels

Fig. 2 shows the block diagram of the grid-connected PV system where a DC-DC converter is responsible for operating at maximum power point (MPP) by embedding

Rooftop Solar Panel Size and Layout Guide

This article, based on practical case studies and calculation formulas, analyzes solar panel dimensions, spacing, and rooftop assessment methods to help distributors and users select ...



Complete Guide to Photovoltaic Panel Sizes for Solar ...

Learn how to choose the right photovoltaic panel size for your solar system. Discover energy output, cost, and efficiency tips for commercial use.

Standard Solar Panel Sizes And

Wattages (100W-500W Dimensions)

The goal here is to get to the average solar panel size by wattage. You can find typical dimensions of 100W, 150W, 170W, 200W, 200W, 220W, 300W, 350W, 400W, and 500W solar panels summarized ...



Standard photovoltaic module panels

In the solar panel size chart below, we've broken down the standard solar PV panel sizes by their average cost range. Keep in mind that these are the sizes and prices of a single solar panel, not a ...

Understanding Photovoltaic Panel Sizes - What You Need to Know ...

In this detailed guide, we'll explain how solar panel dimensions correlate with wattage, the different size standards, and how to calculate the best fit for your energy goals. What Are ...



Solar Panel Size & Dimensions Guide 2025 , Complete Specs

In this comprehensive guide, you'll learn everything you need to know about solar panel sizing, from standard dimensions



to weight considerations, helping you determine the perfect solar ...

Design and Sizing of Solar Photovoltaic Systems

A simple standalone PV system is an automatic solar system that produces electrical power to charge banks of batteries during the day for use at night when the sun's energy is unavailable.



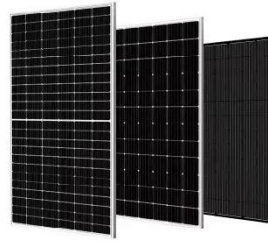
Solar Panel Size and Wattage Chart: Standard Sizes & Uses for Each

Using a solar panel size chart can help you choose the best types of solar panels for your home or application. Because the size of a standard solar panel can vary, a chart that outlines the ...

standard solar photovoltaic panel sizes explained

Discover standard solar photovoltaic panel sizes. Choose the perfect fit for your installation with our expert guide.

Learn more today!



Contact Us

For catalog requests, pricing, or partnerships, please visit:
<https://espay.es>

