

**Espay Solar Energy S.L.**

# **Requirements for laying array photovoltaic panels**



## Overview

---

In this comprehensive guide, we'll delve into the intricacies of solar panel array layout to help you make the most out of your solar photovoltaic (PV) system. Economics Favor All Market Segments: With residential systems achieving 6-10 year payback periods and utility-scale installations reaching \$1.50 per watt, PV arrays offer compelling returns across all applications, enhanced by the 30% federal tax credit through 2032. Performance Optimization. The Renewable Energy Ready Home (RERH) specifications were developed by the U.S. Environmental Protection Agency (EPA) to assist builders in designing and constructing homes equipped with a set of features that make the installation of solar energy systems after the completion of the home's. t Guidelines (the Guidelines), also called "Step 1: Structural PV Array Mounting Requirements Checklist" (the "Checklist"). It describes the structural engineering principles and assumptions behind the Guidelines Checklist and delineates how the document conforms to the International Building Code (IBC) to provide. When installing photovoltaic panels on one- and two-family homes, it's important to understand the requirements for access pathways and the requirements for setback from the ridge, which only apply to roofs with a slope greater than a 2-in-12 pitch.

## Requirements for laying array photovoltaic panels

---



### Array photovoltaic support layout requirements

IEC 62548-1:2023 sets out design requirements for photovoltaic (PV) arrays including DC array wiring, electrical protection devices, switching and earthing provisions.

### Detailed Structural Commentary for Rooftop PV Arrays for the ...

B.7. In areas of significant seismic activity (Seismic Category C, D, E or F), PV array covers no more than half the total area of the roof (all roofs included).



### Residential Solar Panel Requirements

NFPA 1 provides guidance on how solar photovoltaic panels must be installed on the roofs of homes.

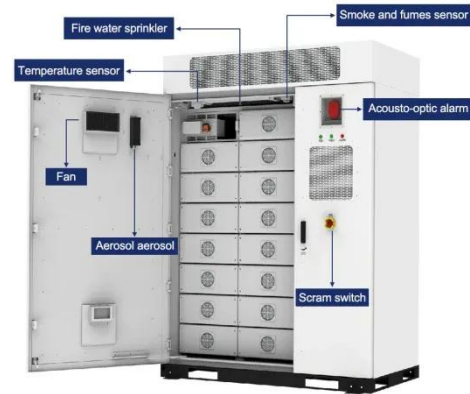
## Solar Photovoltaic: SPECIFICATION, CHECKLIST AND GUIDE

About the Renewable Energy Ready Home Specifications Assumptions of the RERH Solar Photovoltaic Specification Builder and Specification Limitations

- 1.5 Document the solar resource potential at the designated array location
- 3.3 Install a conduit for the AC wire run from the designated inverter location to the electric service panel
- 4.2 Record the name and Web address of the electric utility service provider

- 5.1 Landscape Plan
- 5.2 Placement of non-array roof penetrations and structural building elements

**Appendix A: RERH Labeling Guidance**  
 The Renewable Energy Ready Home (RERH) specifications were developed by the U.S. Environmental Protection Agency (EPA) to assist builders in designing and constructing homes equipped with a set of features that make the installation of solar energy systems after the completion of the home's construction easier and less expensive. The specifications See more on Missing: laying array  
 Must include: laying array

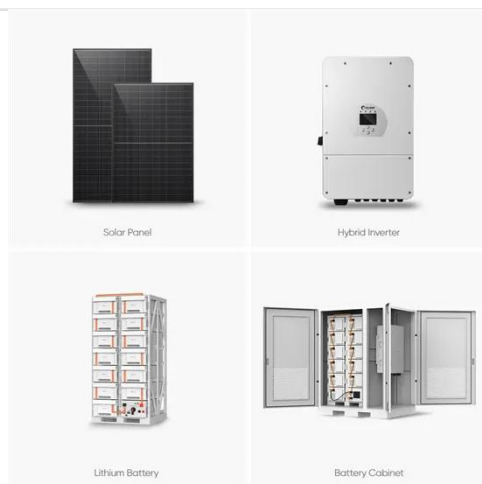


## Videos of Requirements for Laying Array Photovoltaic Panels

Watch video 11:38 "Unlocking Solar Power System Efficiency: Ultimate Guide to PV String Sizing!" Ak Electric DIY 100.9K views  
 Watch video 14:02 "Installing a Ground Mount Solar Array, IronRidge System Step-by-Step" SolarEngineering 3.2K views 2 months ago  
 Watch video 17:34 "6Kw On-Grid Solar Complete Step-By-Step Installation for Home, Solar Panel Installation for Home" Kamal Kumawat 168.7K views 8 months ago  
 Watch full videos [solsmart](#) [PDF]

## Detailed Structural Commentary for Rooftop PV Arrays for the ...

B.7. In areas of significant seismic activity (Seismic Category C, D, E or F), PV array covers no more than half the total area of the roof (all roofs included).

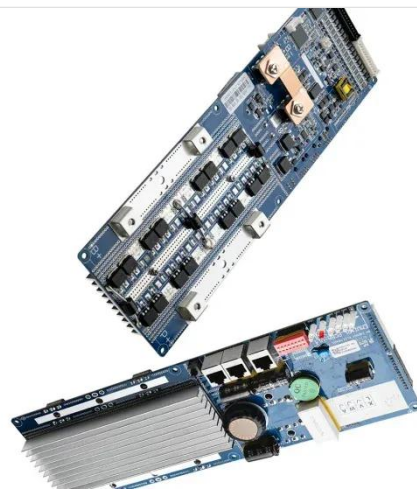


### Complete Guide To PV Arrays: Design, Installation & Performance ...

Comprehensive guide to photovoltaic arrays covering design, installation, performance optimization, and costs. Expert insights for residential and commercial applications.

### Solar Photovoltaic System Design Basics

PV arrays must be mounted on a stable, durable structure that can support the array and withstand wind, rain, hail, and corrosion over decades. These structures tilt the PV array at a fixed angle ...



### A Guide to Photovoltaic Systems Installation: From Setup to ...

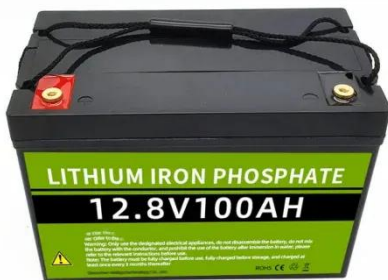
Mounting the Solar Modules: The installation begins with setting up the mounting system, which can be done on



rooftops or on ground-mounted structures. The choice of racking depends on several ...

## Solar Panel Array Layout

Optimize your solar panel array layout for maximum efficiency. Learn about key components and factors to consider in our expert guide.



## Structural Requirements for Solar Panels -- Exactus Energy

This comprehensive guide outlines the structural requirements for solar panels and provides an overview on the inner workings of the installation process.

## Solar Photovoltaic: SPECIFICATION, CHECKLIST AND GUIDE

Although system arrays (panels or collectors) can be racked up to meet the inclination/tilt needed for optimal system output, this specification is based on and

limited to the known building attributes  
(roof ...



### From Arrays to Inverters--Here's Your PV System Checklist

Begin the final system check by verifying that the array configuration is correct and that the proper number and model of PV modules are used. The array should be configured to match the ...

### Contact Us

For catalog requests, pricing, or partnerships, please visit:  
<https://espay.es>

