

Espay Solar Energy S.L.

Photovoltaic support weight calculation



Overview

Provide panel count, dimensions, and weights. Use a custom array area if gaps or spacing are significant. Export results to CSV or PDF for. Caution: Photovoltaic system performance predictions calculated by PVWatts® include many inherent assumptions and uncertainties and do not reflect variations between PV technologies nor site-specific characteristics except as represented by PVWatts® inputs. For example, PV modules with better. Calculations - The weight of the complete system, including all of the working fluid in thermal systems, the weight of the complete system per square foot, and the concentrated load at each mounting location. Elevations - For any installation that will not be flush with the roof, a simple building. f solar panels your roof can accommodate. Proper load distribution ensures the structural safety of the home when installing solar panels. Solar panel weight can vary based on panel type and size, making understanding roof load distribution essential for. Proper structural design must account for dead loads (panel and equipment weight of 30-50 pounds per panel), live loads (maintenance personnel and snow accumulation), wind forces, and seismic activity based on ASCE 7 standards and International Building Code (IBC) requirements.

Photovoltaic support weight calculation



Calculated weight of photovoltaic support

An engineering example of flexible photovoltaic support with a span of 15m is calculated and analyzed, and then compared with the finite element calculation results.

PVWatts Calculator

Estimates the energy production and cost of energy of grid-connected photovoltaic (PV) energy systems throughout the world. It allows homeowners, small building owners, installers and manufacturers to ...



GRADE A BATTERY

LiFePO4 battery will not burn when overcharged or over discharged, overcurrent or short circuited and can withstand high temperatures without decomposition.

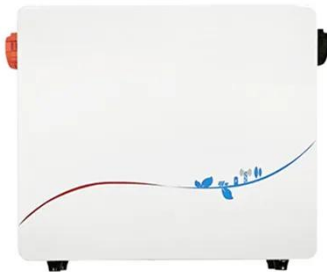


How to calculate the weight of photovoltaic panel support

You can calculate the amount of weight a solar panel system will add to your roof by multiplying the number of panels you need by the weight of each individual panel.

Roof Solar Panel Mount Weight & Wind Load Calculator

Estimate panel weight, ballast, and wind uplift for rooftops. Handles pitched and flat roofs with safety. Get quick calculations, exports, and clear step guidance today.

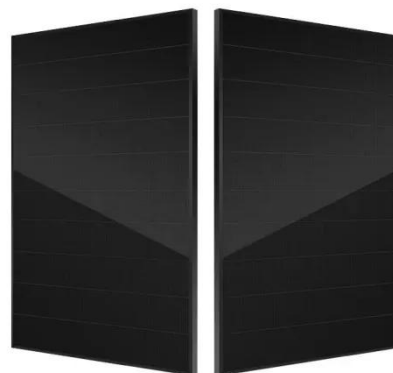


Solar Panel Weight: Structural Considerations For Safe Installation

Learn solar panel structural requirements: load calculations, ASCE 7 standards, mounting systems, building codes, & permit compliance for safe installations.

Photovoltaic Concrete Support Weight Calculation: The Engineer's

With new materials like graphene-enhanced concrete and AI-powered load prediction models, photovoltaic concrete support weight calculation is evolving faster than a viral TikTok trend.



Roof Load Distribution Calculations for Solar Panel Structural Safety

Roof load distribution calculations for solar panel structural safety are essential for ensuring your solar energy system remains secure and effective.

Understanding how to accurately ...



Solar Array Weight and Loading Calculation Worksheet

Calculations - The weight of the complete system, including all of the working fluid in thermal systems, the weight of the complete system per square foot, and the concentrated load at each mounting ...



Photovoltaic support foundation weight calculation

To calculate the structural load of solar panels on a roof, several factors must be considered, including the number and weight of the panels, the weight of the mounting system and components, and any ...

Calculation of the weight of the cement pier for photovoltaic support

The Concrete Pier Calculator is a handy

tool designed to assist users in calculating the volume of concrete required to construct concrete piers for various applications, such as building



Contact Us

For catalog requests, pricing, or partnerships, please visit:
<https://espay.es>

