

Espay Solar Energy S.L.

Photovoltaic panel grade QB485 watt



Overview

This 1500 V UL/IEC module utilizes Q. ANTUM DUO-Z technology and superior cell interconnection to provide exceptional yields of up to 490Wp with a low LCOE. The double glass module design and high-tech aluminum alloy frame ensure increased durability and versatile mounting options. Power (measured in watts) and efficiency (how well panels convert sunlight to electricity) are some of the most common metrics used to compare solar panel products. While they are not. ¹ See data sheet on rear for further information. ² APT test conditions according to IEC / TS 62804-1:2015 method B (-1500 V, 168 h) including post treatment according to IEC 61215-1-1 Ed. PEAK DUO XL 485 watt solar panel features 144 monocrystalline bifacial Q. Delivering higher output and performance, the Q. 9% efficiency to maximize the light absorption area through its innovative Q.

Photovoltaic panel grade QB485 watt



Hanwha Q-Cell 485 Watt Solar Panel

Bifacial Q.ANTUM solar cells with zero gap cell layout make efficient use of light shining on the module rear-side for radically improved LCOE.

Q Cells Q.PEAK DUO XL-G10.3 485W Solar Panel

Take advantage of cutting-edge solar technology with the Q.PEAK DUO XL-G10.3 485W Solar Panel. This 1500 V UL/IEC module utilizes Q.ANTUM DUO-Z technology and superior cell interconnection ...



Hanwha Qcells 485W Q.PEAK DUO Bifacial Solar Panel XL-G10.3/BFG

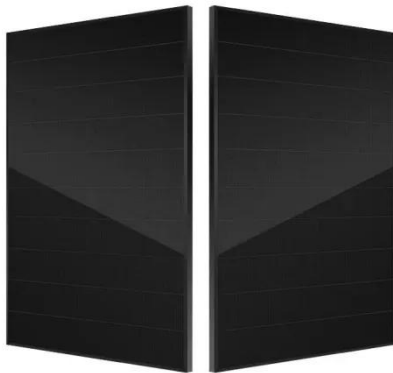
Introducing the Hanwha 485W Bifacial Solar Panel Q.PEAK DUO XL-G10.3, a cutting-edge solution for efficient solar energy generation. This high-performance solar panel is designed to provide ...



485W Solar Module, 156 Half Cell,

Mill/Silver

The Q.PEAK DUO XL-G10 / BFG module is ideal for commercial and utility applications thanks to a combination of its innovative Q.ANTUM DUO-Z technology and cutting-edge cell interconnection. ...



Q CELLS DUO XL G10 485W

All you need to know about the DUO XL G10 485W solar panel including rating, cost, efficiency, and warranty terms.

Qcells 485W 156 Half-Cell 1500V Silver Bifacial Solar Panel, Q.PEAK

...

Greentech Renewables supplies Qcells 485W 156 Half-Cell 1500V Silver Bifacial Solar Panel, Q.PEAK DUO XL-G10.3/BFG 485 and other pre-qualified solar equipment from Qcells through our extensive ...



Hanwha Qcells 485W Q.PEAK DUO Bifacial Solar ...

Introducing the Hanwha 485W Bifacial Solar Panel Q.PEAK DUO XL-G10.3, a ...



485 watt Q Cells Mono XL Bifacial Solar Panel

The Q Cells 485 watt XL bifacial module was designed for large scale applications including rooftop arrays on commercial and industrial buildings, as well as ground-mounted commercial installations.



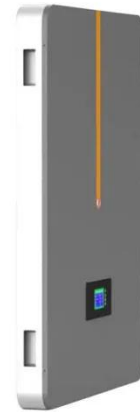
Q CELLS 485W Solar Panel 156 cells Bifacial Q.PEAK DUO

At 20.9% efficiency, G10.3 BFG 485W offers surprising performance for its weight and size. And while conventional panels use only one side to absorb photons, bifacial modules employ both sides at the ...

Q.PEAK DUO XL-G10 SERIES

Q.ANTUM DUO Z combines cutting edge cell separation and innovative wiring with Q.ANTUM Technology for higher

yield per surface area, lower BOS costs, higher power classes, and an ...



Warranty
10 years

LiFePO₄

Intelligent BMS

Wide Temp:
-20°C to 55°C



Qcells > 485 Watt BiFacial Mono Solar Panel

Bifacial Q.ANTUM solar cells with zero gap cell layout make efficient use of light shining on the module rear-side for radically improved LCOE.

Contact Us

For catalog requests, pricing, or partnerships, please visit:
<https://espay.es>

