

**Espay Solar Energy S.L.**

# **Photovoltaic panel double slope design specifications**

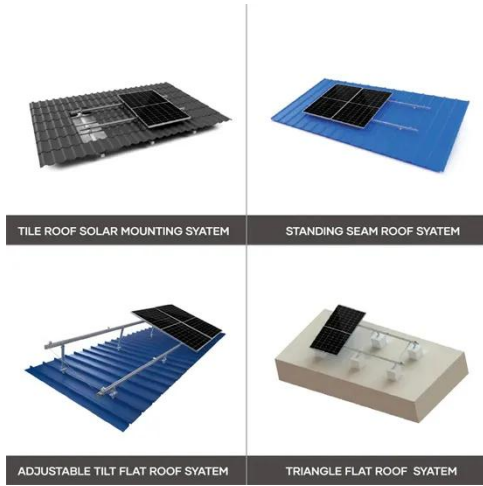


## Overview

---

It includes detailed technical information and step-by-step methodology for design and sizing of off-grid solar PV systems. peak output of a Solar PV system with peak power 650kWp. In this icity yields from a fixed slope p oped and experimentally validated. Photovoltaic (PV) systems (or PV systems) convert sunlight into electricity using semiconductor materials. It can also generate electricity on cloudy and rainy days from reflected sunlight. PV systems can be designed as. This guide walks you through the process of completing a Flush Mount System design. In addition to this document, IronRidge provides a free online design tool, installation manuals, pre-stamped engineering letters, cut sheets, and more. To get started, sign up for Design Assistant.

## Photovoltaic panel double slope design specifications



### Double slope photovoltaic panel size specification table

To more effectively assess the influence of photovoltaic panels on drivers navigating curved roadside slopes, this section first analyzes the effect of roadside slope

### Design specification for photovoltaic support on steep slopes

While there is no strict minimum roof age for solar panel installation, newer roofs built with modern materials and properly maintained are generally better candidates.

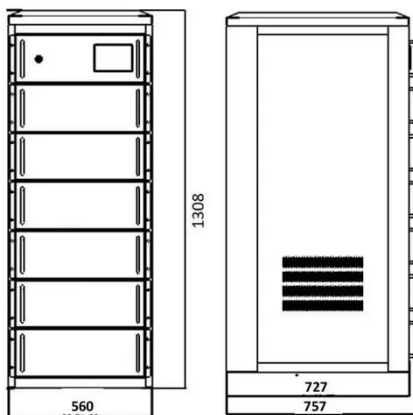


### The optimal design for photovoltaic power plants on sites with a

Unlike all previous work reviewed, this study takes into account all the indicators necessary for the design of a photovoltaic plant. In addition, a detailed economic study is presented.

### Steep slope photovoltaic panel installation and transportation plan

The success of a PV installation relies on solar panel mounting systems. Here we discuss the four-step approach to selecting the right mounting structure for your PV project.



## Solar Photovoltaic: SPECIFICATION, CHECKLIST AND GUIDE

Unlike all previous work reviewed, this study takes into account all the indicators necessary for the design of a photovoltaic plant. In addition, a detailed economic study is presented.

## Solar Photovoltaic: SPECIFICATION, CHECKLIST AND GUIDE

The RERH specifications and checklists take a builder and a project design team through the steps of assessing a home's solar resource potential and defining the minimum structural and system ...



## Design Specifications for Photovoltaic Module Panels

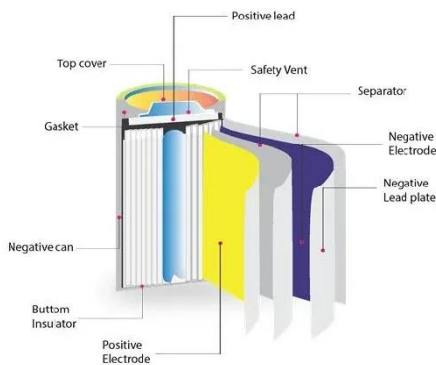
The Federal Energy Management Program (FEMP) provides this tool to federal agencies seeking to procure solar photovoltaic (PV) systems with a



customizable set of technical specifications.

## PITCHED ROOF DESIGN GUIDE

Design Assistant provides a Project Report that is designed to aid in permitting, procurement, and installation. The PDF document includes installation drawings, array details, and the maximum spans ...



## Solar PV Guidline

The PV-100 is to include a one-line electrical diagram for the PV system and its interface to the local electrical utility, as well as the Sheet Notes referenced by this Guideline. The drawing shall also ...

## Slope Solar 101: Key Requirements for Installing Photovoltaic Panels ...

With global solar capacity projected to triple by 2030, engineers are increasingly eyeing slopes for PV installations. But here's the kicker:

slopes aren't just angled surfaces -  
they're dynamic ...



## Design and Sizing of Solar Photovoltaic Systems

The 6-hour course covers fundamental principles behind working of a solar PV system, use of different components in a system, methodology of sizing these components and how these can be applied to ...

## Contact Us

For catalog requests, pricing, or partnerships, please visit:  
<https://espay.es>

