

**Espay Solar Energy S.L.**

# **Parallel voltage of solar battery cabinet lithium battery pack in brno czech republic**



## Parallel voltage of solar battery cabinet lithium battery pack in brn

---



### Balancing multiple LiTime 24V batteries connected in parallel

Below two steps are necessary to reduce the voltage difference between batteries and let the battery system perform the best of in in series or/and in parallel.  
Step 2: Connect all of the ...

---

### How to Connect Two Lithium Battery Packs in Parallel: A Step-by-Step

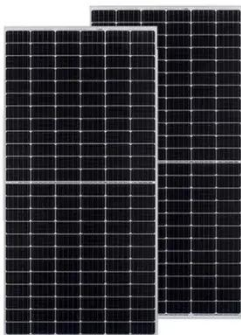
Proper parallel connection of lithium batteries requires attention to voltage matching, cable sizing, and monitoring system integration. When implemented correctly, this configuration significantly enhances ...



---

### Helpful Guide to Lithium Batteries in Parallel and Series

Understand how to connect lithium batteries in parallel and series. Get practical tips and avoid common pitfalls. Start optimizing your battery setup today!



---

### How to Connect Lithium Solar

## Batteries in Series & Parallel

Connecting lithium solar batteries in series or parallel is essential for customizing energy storage systems. In a series connection, the voltage increases while the capacity remains the same, ...

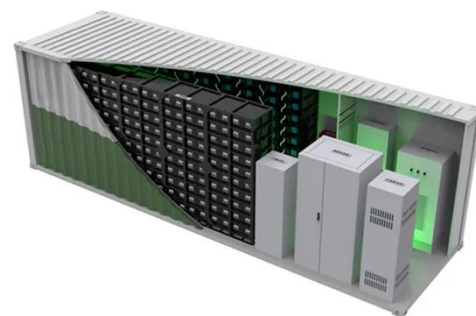


### Protection Board Lithium Battery Pack Parallel Connection: Best

Parallel connections for lithium battery packs with protection boards have become a cornerstone in industries like renewable energy, electric vehicles, and industrial backup systems.

## Guide to Connecting Batteries in Parallel Properly - PowMr

Our technicians usually achieve this by disconnecting the batteries from the charging source and letting them rest in parallel for about 3 hours, allowing higher-voltage batteries to ...



### Wiring Batteries in Parallel: Understanding the Dangers ...

Learn how to wire batteries in parallel to boost capacity and extend power. Step-by-step guide for efficient battery connections.



## A Complete Guide to Parallel Connection of Lithium Ion Batteries

You can connect lithium batteries in a parallel connection to achieve greater capacity. The voltage will remain constant. Always ensure that your batteries have the same voltage and ...



## Batteries in Series vs Parallel: Understand The Differences

In parallel connections, the voltage remains the same as a single battery, but the capacity is the sum of individual battery capacities. Using the same example, two 12V 100Ah batteries in parallel would ...

## Battery Pack Calculator , Good Calculators

Here's a useful battery pack calculator for calculating the parameters of battery packs, including lithium-ion batteries.

Use it to know the voltage, capacity, energy, and maximum discharge current of your ...



---

## Contact Us

---

For catalog requests, pricing, or partnerships, please visit:  
<https://espay.es>

