

Espay Solar Energy S.L.

Maintenance Manual for 60kWh Modular Battery Cabinet



Maintenance Manual for 60kWh Modular Battery Cabinet

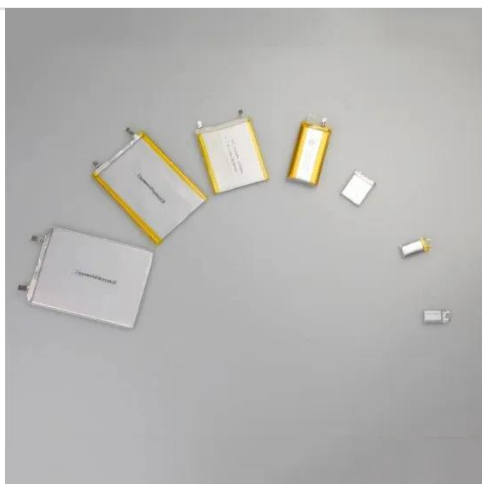


BC58 Battery Cabinet Installation, Operation, & Maintenance ...

1. IMPORTANT INFORMATION ABOUT THIS MANUAL SAVE THESE INSTRUCTIONS! This manual contains important information that is needed during the installation and maintenance of the system.

Galaxy Lithium-ion Battery Cabinet

Important Safety Instructions -- SAVE THESE INSTRUCTIONS. Read these instructions carefully and look at the equipment to become familiar with it before trying to install, operate, service or maintain it.



Eaton Samsung Gen 3 Battery Cabinet Installation and Operation ...

This manual describes how to install the Eaton Samsung Gen 3 battery cabinet and is divided into chapters. Read and understand the procedures described to ensure trouble-free installation and ...

INSTALLATION GUIDE

Qualified and authorized personnel are required to conduct the installation and maintenance procedures adhering to all safety standards and system requirements outlined in this document. This manual is ...

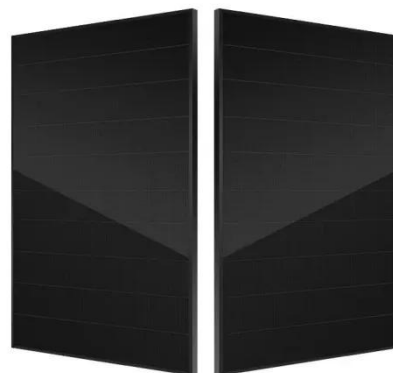


Vertiv Liebert® APM2 Modular EBC User Manual

This manual contains important instructions that should be followed during installation of Vertiv™ Liebert® APM2 Modular External Battery Cabinet (EBC) and accessories.

Sol-ark L3-HV-60KWH-60K Manuals , ManualsLib

View online or download Sol-ark L3-HV-60KWH-60K Installation Manual And User's Manual.



Vertiv Liebert® EXL S1 Operation and Maintenance Guide

This manual contains important instructions that should be followed during operation and maintenance of the Vertiv™ Liebert® EXL S1

uninterruptible power system and DC source. **WARNING!** Risk of ...



Mitsubishi Electric Power Products, Inc. UBC64 Battery Cabinet

IMPORTANT INFORMATION ABOUT THIS MANUAL SAVE THESE INSTRUCTIONS! This manual contains important information that is needed during the installation and maintenance of the system.



Oasis 60 Battery Cabinet

This manual will provide detailed operating instructions for customers using Oasis 60. Please read this manual carefully before using the product and store it properly in a place where it is ...



20KW/50kWh , 30KW/60KWh HIGH VOLTAGE

Press the start button in sequence. If there is a button switch on the battery layer, first turn on the metal start button

of the battery, and finally turn on the start button of the battery box control box(PDU).



Contact Us

For catalog requests, pricing, or partnerships, please visit:
<https://espay.es>

