

# **Kw solar inverter Description**



**Single group (5 KWH)**



**Wall mounting display**



**Stack installation display**



**Cabinet and rack installation display**



## Kw solar inverter Description

---

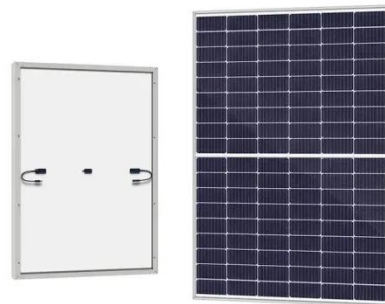


### Understanding Inverter Power Ratings: kW vs kVA Explained

kW refers to the real or usable power output of an inverter. kVA represents the total power capacity it can carry, including power lost in phase difference (reactive power). For example, an inverter rated at ...

### How to Choose the Right Size Solar Inverter: Step-by-Step with Real

This guide walks you through calculating inverter size based on panel capacity, power usage, and safety margins. We use real examples from installations in Texas and Queensland to ...



### A Guide to Solar Inverters: How They Work & How to Choose Them

Complete 6kW solar inverter guide covering top models, installation requirements, costs, and performance. Compare SMA, SolarEdge, Fronius & more.

### What Size Solar Inverter Do I Need?

## Experts Break It Down

What Size Solar Inverter Do I Need? A solar inverter should closely match your solar system's output in kW--typically within 80% to 120% of your total panel capacity.



---

## 6kW Solar Inverter Guide 2025: Best Models, Installation & Costs

Complete 6kW solar inverter guide covering top models, installation requirements, costs, and performance. Compare SMA, SolarEdge, Fronius & more.



---

## Solar Inverters: Types, Pros and Cons

Microinverters are small units built into each individual solar panel that convert power. Think of it as having mini currency exchange stations on every nearby street corner. This gives each panel the ...



---

## A Guide to Solar Inverters: How They Work & How to Choose Them

Solar arrays use inverters to change the DC to AC, which is safe for home usage. How do Solar Power Inverters Work? The

solar process begins with sunshine, which causes a reaction within the solar ...



### Solar Power--kVA or kW: The Difference That Could Make or

Confusion between kVA and kW is one of the most common--and costly--mistakes in solar power system design. Whether you're sizing an inverter, calculating ROI, or explaining system ...



### Understanding Inverter Ratings and Specifications for Solar Power

Measured in watts (W) or kilowatts (kW), this rating ensures that your inverter can handle the electrical load of your appliances and devices. Another crucial rating is the voltage rating, which specifies the ...



### Breaking Down kW in Solar System Sizes: 5kW, 8kW, 10kW Inverters

Solar power is rated in kilowatts (kW) which helps to determine how much power they can produce and which

system to choose. We'll use this guide to contrast 5kW, 8kW, and 10kW solar ...



## Solar inverter

A solar inverter or photovoltaic (PV) inverter is a type of power inverter which converts the variable direct current (DC) output of a photovoltaic solar panel into a utility frequency alternating current (AC) that ...

## Contact Us

For catalog requests, pricing, or partnerships, please visit:  
<https://espay.es>

