

Espay Solar Energy S.L.

How to trigger the power supply of the battery cabinet

 **TAX FREE**    

ENERGY STORAGE SYSTEM

Product Model
HJ-ESS-215A(100KW/215KWh)
HJ-ESS-115A(50KW 115KWh)

Dimensions
1600*1280*2200mm
1600*1200*2000mm

Rated Battery Capacity
215KWH/115KWH

Battery Cooling Method
Air Cooled/Liquid Cooled



How to trigger the power supply of the battery cabinet

Support Customized Product



Eaton Samsung Gen 3 Battery Cabinet Installation and Operation

...

Control wiring can be routed through the sides of the battery cabinets in side by side configurations or through the top of the battery cabinets using conduit in standalone configurations.

755-00086 R02 BC16 MITSUBISHI MANUAL

The BC16 battery cabinet is equipped with four casters, two swivel types in front and two rigid types in the back. Move the cabinet into the desired location and lock the front casters.



BC58 Battery Cabinet Installation, Operation, & Maintenance ...

When installing this power system, follow all applicable federal, state and local regulations as well as industry guidelines to insure proper system installation. Only qualified electricians or DC power ...

TRIPP LITE EXTENDED-RUN SINGLE-

PHASE BATTERY CABINET POWER SUPPLY ...

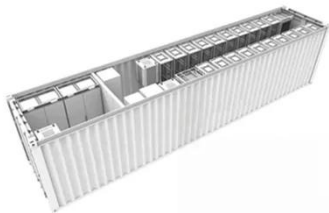
If the battery cabinet includes an integrated battery charger ("C" models only), examine the wires at the DC output terminal closely. If any of the leads are bent or otherwise damaged from shipping, contact ...



TAX FREE

1-3MWh

BESS



Mitsubishi Electric Power Products, Inc. BC43 Battery Cabinet

Battery cabinets that are not supplied with an incorporated DC output disconnect device must have an appropriate disconnect device provided external to the cabinet.

BC Series UPS Battery Cabinets

To ensure the safe and proper use of ZincFive BC Series UPS Battery Cabinet, the following symbols are used throughout this manual or on the equipment. Operators, buyers, and technicians must ...



Energy Storage Battery Cabinet , Power-On Operation Guide

This video walks through the correct power-on procedure for JNTech energy storage battery cabinets.



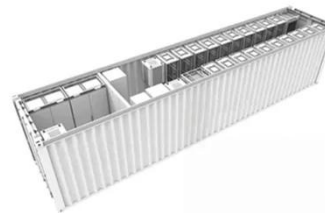
Connect the Power Cables

Connect the DC+ and DC- cables to the DC+ and DC- terminals. Connect the power cables in the UPS. If more battery cabinets are part of the solution, connect all battery cabinets to the UPS according to ...



 TAX FREE

1-3MWh
BESS



Eaton 9395XC UPS and Samsung Gen 3 Battery Cabinet System ...

The installation manuals of the UPS and battery cabinet describe how to install and operate the Power Expert UPS and battery cabinets. Read and understand the procedures described in the manuals to ...

How to trigger the power cord of the battery cabinet

Set fourth battery in cabinet (being careful of the door fastener tabs hanging down) and attach the other end of the

fast-on lugged cable to the negative terminal on the third battery (fast-on terminal).



Contact Us

For catalog requests, pricing, or partnerships, please visit:
<https://espay.es>

