

Espay Solar Energy S.L.

How many square meters are there for a 10-kilowatt photovoltaic panel



How many square meters are there for a 10-kilowatt photovoltaic p



Solar Power per Square Meter Calculator

A solar power per square meter calculator takes details regarding these factors and then gives the accurate output generated by the solar panel per square meter.

10kW Solar System Overview

To build a 10kW solar system with 415W panels, you will need 24 panels, giving you a total capacity of 9.96kW. Each panel will measure approximately 1.8m x 1.1m. Therefore, you'll need a minimum of 48 ...



Solar Panel Output Per Square Meter

Discover how much electricity solar panels generate per square meter, explore efficiency factors, technology comparisons, and future innovations in photovoltaic energy.

How many square meters of space is required per kw solar panel?

Typical solar panels range from 250W to 400W, translating to an area of about 1.6 to 2.2 square meters per panel, leading to a total space requirement of around 5 to 10 square meters for 1 kW.



10 square meters of photovoltaic panel power generation

Photovoltaic module composed of 72 solar cells: 1.938 square meters (1.956 meters x 0.991 meters) Note: There are larger and more efficient photovoltaic modules on the

how much area required for 10kw solar plant

Considering an average panel efficiency of 18-20% and a moderate mounting system, a 10kW solar plant would require an area of approximately 600-800 square meters. This estimation assumes an ...



How many square meters are there for a 10-kilowatt photovoltaic ...

Number of solar panels needed = $9.86 \text{ kW} / 0.35 \text{ kW per panel}$, which equals 28.17 panels. there are many factors

that can affect the effectiveness of solar panels, such as shading, roof



How many square meters does solar energy 10kw , NenPower

Solar energy system size for 10 kW output is approximately 60 to 80 square meters, depending on the efficiency of the solar panels, installation angle, and geographical location.



Solar Power per Square Meter Calculator

Solar Panel Output Calculator
Solar Panels Kwh Calculator
Solar Panel Area Per Kw
Wattage is the output of solar panels that is calculated by multiplying the volts by amps. Here, the amount of the force of the electricity is represented by volts. The aggregate amount of energy used is expressed in amps (amperes). Output ratings on most solar panels range between 250 watts to 400 watts. See more on energy theory saas-fee-azurit [PDF]

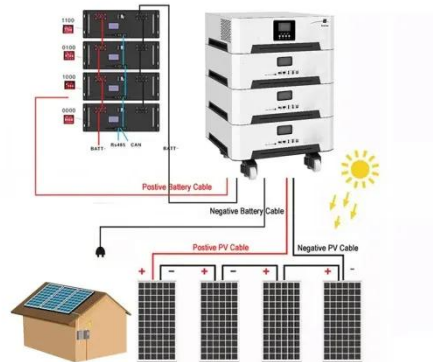
10 square meters of photovoltaic panel power

generation

Photovoltaic module composed of 72 solar cells: 1.938 square meters (1.956 meters x 0.991 meters) Note: There are larger and more efficient photovoltaic modules on the

How to Calculate the Surface Area Required by Solar Panels

Lets assume that you want to install 10 solar panels rated at 100 Watts each and having a conversion efficiency of 18%. The total power output of the solar system can be calculated as: Total ...



Photovoltaics

Calculator for the power per area or area per power of a photovoltaic system and of solar modules. You can enter the size of the modules and click from top to bottom, or omit some steps and start e.g. with ...

Contact Us

For catalog requests, pricing, or partnerships, please visit:
<https://espay.es>

