

**Espay Solar Energy S.L.**

# How long does it take for a lithium battery to be fully charged



## Overview

---

On average, a standard lithium-ion battery takes between 1 to 4 hours to reach full charge when using a typical charger. Fast-charging technologies can reduce this time substantially, but they must be managed carefully to avoid overheating and capacity degradation. SLA batteries usually handle. A typical smartphone lithium battery might take 1-2 hours. A high-capacity power bank could take 3-5 hours. The real answer depends on a fascinating interplay of factors. Built-in protection: Most lithium batteries come with a Battery Management System (BMS) that prevents. Finally, we can calculate the time it takes to fully charge a Tesla: Calculating the battery charging time with this calculator is straightforward and efficient; just follow the steps: Input the battery capacity in Ah, or mAh. This tool is crucial for those looking to efficiently manage their energy resources, whether for personal devices or larger energy systems. By inputting details such as.

## How long does it take for a lithium battery to be fully charged

---



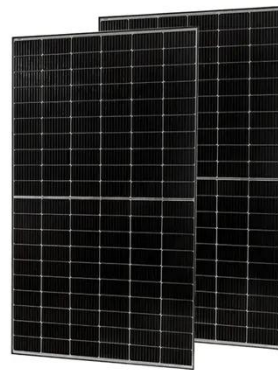
### how long does it take for a battery to charge

Older lead-acid batteries have a slow and complex charging process that can take 8+ hours. Modern lithium-ion batteries, however, are stars of efficiency.

---

### Lithium (LiFePO4) Battery Charge Time Calculator & Formula

Example: How Long Does It Take To Charge A 12V Lithium Battery?  
Screenshot from calculator: How long to charge 100ah lithium battery from 80% DoD with 200 watt solar panels? A ...



### How Long Does It Actually Take to Fully Charge Lithium Batteries?

How long does it typically take to fully charge a lithium battery? Charging times vary depending on the battery capacity and charger output, but most lithium batteries take between 1 to 4 hours to reach full ...

---

### Battery Charge Time Calculator

Calculating the battery charging time with this calculator is straightforward and efficient; just follow the steps: Input the battery capacity in Ah, or mAh. If capacity is in Wh or kWh, use watt hour calculator ...



## How Long Does It Take To Charge a Lithium Battery?

How Long Does It Take To Charge a Lithium-ion Battery? The conventional lithium battery takes about 2 to 4 hours to charge fully. The duration mainly depends on its age, ampere ...

## How Long to Charge a Lithium Battery for the First Time?

The simple answer: For lithium batteries, the first charge should last just as long as it takes to reach full--usually 1 to 3 hours depending on the device. Forget the myths about 8-hour ...

50KW modular power converter



## Lithium Battery Charge Time Calculator

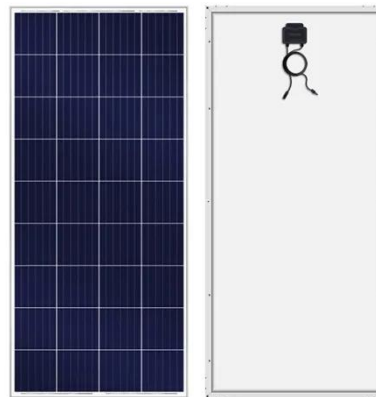
Our Lithium Battery Charge Time Calculator helps you estimate charging duration based on battery specifications and charger capabilities.



---

## Battery Charge Time Calculator , How Long to Fully Charge a Battery

Using the Battery Charge Time Calculator involves several straightforward steps: Battery Capacity: Enter the capacity of the battery in ampere-hours (Ah). This is usually found on the battery ...



---

## How Long to Charge a Lithium Battery for the First Time: Expert Guide

How Long Should You Charge a Lithium Battery for the First Time? Most lithium-ion batteries reach a full charge within 2-4 hours, depending on capacity (mAh), charger speed, age, ...

---

## Charging a Lithium-Ion Battery: How Long It Takes, Tips, and Methods

It typically takes about 1 to 4 hours to fully charge a lithium-ion battery,

depending on the device and charger used. Most smartphones fully charge in approximately 1.5 to 2.5 hours with a ...



---

## Contact Us

---

For catalog requests, pricing, or partnerships, please visit:  
<https://espay.es>

