

Espay Solar Energy S.L.

How far are the photovoltaic panels from the park roads



Overview

Knowing the minimum angle of incidence of sunlight during the year, it is possible to determine the distance between successive rows of photovoltaic panels. The figure below shows the schematic diagram used to calculate the row spacing and the formula for the calculation:. For this purpose, the distances of the rows from each other are determined using the calculations for the angle of incidence of solar radiation for December 23, when the sun is lowest above the horizon. These solar panels generate electricity without emitting greenhouse gasses or the potential for soil or. However, an often overlooked but crucial factor when installing solar panels is the optimal distance between them. 25 miles from where likely building our home (wooded, quiet). These distances are mandated by local ordinances and are designed to create buffers between the solar installation and sensitive areas.

How far are the photovoltaic panels from the park roads

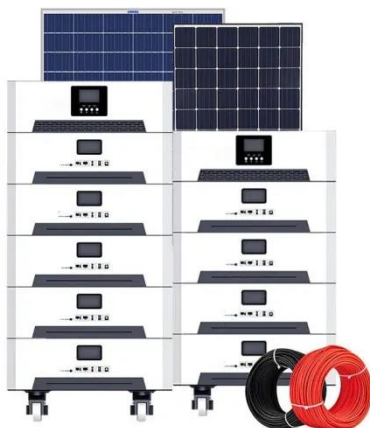


Solar roadways: What you need to know

Can roads outfitted with solar cells provide enough reliable power? Learn about solar roadways and how feasible they actually might be.

How to Calculate the Minimum Distance Between PV Panels?

When installing solar panel systems, it is crucial not only to consider the spacing between panels and installation angles but also to comply with local government and regulatory requirements ...



Safe Living Distance from a Solar Farm , US Light Energy

Wondering how close is too close to a solar farm? Learn what a safe distance is, explore health & environmental concerns, and understand local zoning laws.

All About Solar Roadways: The

Promise Versus The Reality

Can't handle traffic loads: Engineers have thus far been unable to make a solar road panel that can successfully withstand the pressure of heavy vehicles while remaining transparent enough to let ...



Shade Calculator

Knowing the minimum angle of incidence of sunlight during the year, it is possible to determine the distance between successive rows of photovoltaic panels. The figure below shows the schematic ...

All About Solar Roadways: The Promise Versus The Reality

Solar Roadways: The Promise
Solar Roadways: The Reality
Solar Roadways: The Problems
The Alternative: Standard Solar Panels
After successfully generating hype for so many years, what has Solar Roadways achieved so far? And what of the other companies working in this space?
See more on solarreviews Reddit



Can I place my Solar Panels about 1/4 mile from my house?

Generally you'd want to calculate cost of

additional panels at house to compensate for shading vs cost of trenching and line to the site + ground mount. If the latter is cheaper, go for it.



Official MapQuest

Official MapQuest website, find driving directions, maps, live traffic updates and road conditions. Find nearby businesses, restaurants and hotels. Explore!

How Close Can a Solar Farm Be to a House?

Setback requirements establish minimum distances that solar farm components must maintain from property lines, residential structures, and public roads. These distances are mandated ...



Can I place my Solar Panels about 1/4 mile from my house?

Generally you'd want to calculate cost of additional panels at house to compensate for shading vs cost of trenching and line to the site + ground mount. If the latter is cheaper, go for it.



How to transport solar panels safely?

This guide shares my experience to help you transport panels safely, save money, and avoid headaches. Snippet paragraph: Safely transporting solar panels needs careful planning, strong ...



Contact Us

For catalog requests, pricing, or partnerships, please visit:
<https://espay.es>

