

**Espay Solar Energy S.L.**

# **Battery cabinet dimensions for 24-cell cabinets**



## Overview

---

Minimum cabinet height = Rack height (to top of rail) + Battery height + Space above battery (12" ideal) + Charger height + 6" (for space above charger) Chargers need room to breathe and batteries need extra room above for maintenance (watering and testing). Usable Battery En rcurrent, battery temperature, cabinet swi mperatures above 104 °F (40 °C) and below 32 °F (0 . ic Power Products, Inc. Mitsubishi Electric has been manufacturing precision engineered highly reliable uninterruptible power supplies since 1964 and introduced a line of cooling systems in 2021. CPSD's operations include Project Application Engineering, Design Engineering, Service &. Battery cabinet that includes Lithium-ion batteries, Battery Management System (BMS), switchgear, power supply, and communication interface. Ensure compliance with OSHA regulations and protect your workplace from potential hazards. A rack measuring 47. 24" L x 23" D cannot be installed in a 48" L x 24" D enclosure. The dimensions of the cabinets are the outside dimensions, so it is important to take into account the thickness of the material and body stiffeners that are attached to the sides and back of the cabinet for. NOTE: The battery temperature must return to  $\pm 3$  °C /  $\pm 5$  °F of the room temperature before a new discharge at maximum continuous discharge power. If not, the battery breaker may be tripped due to overtemperature protection.

## Battery cabinet dimensions for 24-cell cabinets



### BCM04 battery cabinet Data Sheet

Features & Benefits QUARTER TURN LATCHES for ease of access & door removal BREAKER SIZES for use with 10kVA to 50kVA UPS BATTERY OPTIONS from 80 Watts/Cell to 540 Watts/Cell ...

### Lithium-Ion Battery Storage Cabinet

Customizable to your battery sizes, quantity and other specifications. Full Thermal Runaway Containment: The Lithium-Ion Storage Cabinet exceeds all IFC24 storage standards and eliminates ...



### Specifications

NOTE: Clearance dimensions are published for airflow and service access only. Consult with the local safety codes and standards for additional requirements in your local area.

### Lithium-Ion Battery Cabinets

Shop robust lithium-ion battery cabinets designed for maximum safety and durability. Ensure compliance with OSHA regulations and protect your workplace from potential hazards.



### **LIBSESMG17UL**

Battery cabinet that includes Lithium-ion batteries, Battery Management System (BMS), switchgear, power supply, and communication interface.

### **PWRcell Battery Cabinet Specifications**

The first generation PWRcell Battery Cabinet is an outdoor-rated battery enclosure with a battery management unit (BMU). The cabinet can hold 3-6 battery modules at 3 kWh each.



### **Battery Cabinet Dimensions Guide , Huijue Group E-Site**

Industry data reveals a startling contradiction: While global battery storage capacity grew 42% YoY, 31% of new installations in 2023 required costly

retrofits within 6 months. The core pain ...



### PWRcell 2 Battery Cabinet

Battery Enclosure Only: APKE00076 3.0 kWh PWRcell 2 DCB Battery Module: G0080041 The PWRcell 2 Battery Cabinet can be configured for 9-18 kWh of storage capacity using 3.0 kWh battery modules.


TAX FREE





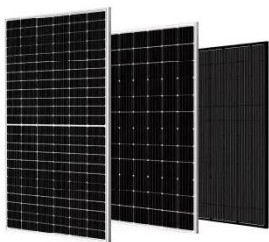

**Product Model**  
 HJ-ESS-215A(100KW/215KWh)  
 HJ-ESS-115A(50KW 115KWh)

**Dimensions**  
 1600\*1280\*2200mm  
 1600\*1200\*2000mm

**Rated Battery Capacity**  
 215KWH/115KWH

**Battery Cooling Method**  
 Air Cooled/Liquid Cooled





### Battery Cabinets

Keep your batteries safe and organized with the help of our indoor and outdoor enclosures. Contact Dowd Battery for more information today!

### Tips for Designing Battery Cabinets/Enclosures , SBS Battery

The dimensions of the cabinets are the outside dimensions, so it is important to take into account the thickness of the material and body stiffeners that are

attached to the sides and back of the cabinet for ...



---

## Contact Us

For catalog requests, pricing, or partnerships, please visit:  
<https://espay.es>

