

Espay Solar Energy S.L.

Angle-type color steel tile photovoltaic bracket



Angle-type color steel tile photovoltaic bracket



Color Steel Tile PV-SAN Bracket Mounting System V01, V02

The pitched roof mounting system's specifications include its suitability for pitched roofs with a maximum angle of 60 to 75 degrees and its ability to withstand various roof types, such as tiles, metals, and ...

Glazed tile and color steel tile photovoltaic bracket installation

The PV modules of color steel tile roof are usually installed flat, and the spacing between the modules is 1.5 times the height of the modules. Due to the variety of tile types on color steel tile ...



Color Steel Tile Solar Angle Mounting System

The color steel tile solar angle mounting system is primarily suitable for commercial and industrial buildings, warehouses, and other scenarios, making it ideal for projects that require enhanced power ...

Photovoltaic Color Steel Tile Bracket

Installation: Your Go-To Guide

That's what installing photovoltaic color steel tile brackets feels like without proper guidance. These unassuming metal pieces are the unsung heroes of solar panel systems, responsible for keeping ...



Color Steel Tile Photovoltaic Bracket

This page contains information, parameters and features of Color Steel Tile Photovoltaic Bracket products. Welcome to visit and consult

Selection of Photovoltaic Mounting Brackets for Color Steel Tile Roofs

Widely used on color steel tile roofs with high waterproofing requirements, such as industrial plants, warehouses, and commercial buildings. Ideal for small- to medium-sized distributed ...



Solar Panel Roof Mounts,Solar Panel Bracket Flat Roof,with ...

The adjustable bracket system is an ideal solution for installation on sloped roofs. It has greater flexibility, so that the installation angle of solar panels can

be within the range of 10-15°, 15-30°, and ...



✓ IP65/IP55 OUTDOOR CABINET

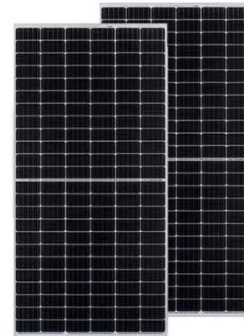
✓ OUTDOOR CABINET WITH AIR CONDITIONER

✓ OUTDOOR ENERGY STORAGE CABINET

✓ 19 INCH

The Ultimate Guide to Color Steel Tile Roof Photovoltaic Bracket

Installing photovoltaic brackets on color steel tile roofs is a straightforward but crucial part of any solar energy system. By following the proper steps, adhering to best practices, and avoiding ...



Roof Mounting Brackets For Solar Panels

Made of high-strength aluminum alloy and stainless steel, it has excellent corrosion resistance and durability, ensuring worry-free long-term use. Suitable for all types of roofs including pitched and flat ...

Color Steel Tile Angle Fixture, Aluminum Alloy Photovoltaic Bracket

The color steel tile angle clamp is mainly used to fix the color steel tile roof

photovoltaic panels. It is made of high-strength aluminum alloy and has corrosion resistance and strength.



Contact Us

For catalog requests, pricing, or partnerships, please visit:
<https://espay.es>

