

Espay Solar Energy S.L.

Alofi solar glass transmittance standard



Alofi solar glass transmittance standard



Fab & application Certification of solar glass

ABSTRACT The SPF solar glass certification was developed in 2002 to guarantee the quality of glazing for use as a transparent cover for solar thermal collectors. More than 200 glass ...

ISO 23237:2023

This document specifies a test method of light transmittance for the laminated solar photovoltaic glass for use in building. This document is applicable to flat modules with light ...

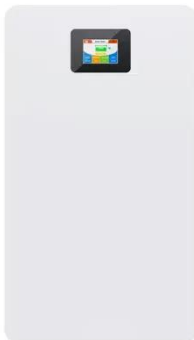


Solar Transmittance/Solar Reflectance Measurement

JIS R3106 "Testing Method on Transmittance, Reflectance and Emittance of Flat Glasses and Evaluation of Solar Heat Gain Coefficient" JIS R3106 stipulates methods for measuring and ...

Performance value terms

Solar Factor or Total Solar Energy Transmittance or g-value (g%) is the total solar radiation transmitted by the glass. Shading Coefficient (sc) is Solar Factor divided by 0.87.



Photovoltaic glass panel transmittance standard

The type of solar glass directly influences the amount of solar radiation that is being transmitted. To ensure high solar energy transmittance, glass with low iron oxide is typically used in solar panel ...

Glass in building -- Laminated solar photovoltaic glass for ...

INTERNATIONAL STANDARD ISO 23237 First2023-11 Glass in building -- Laminated solar photovoltaic glass for use in buildings -- Light transmittance measurement method



ISO/FDIS 23237

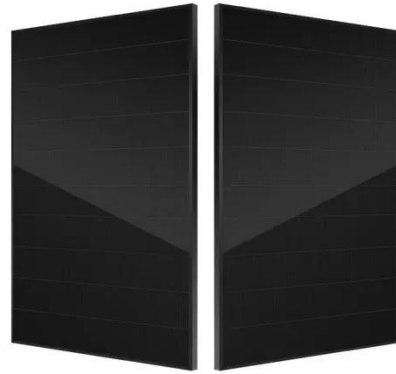
Normative references constitutes following documents are referred amendments) requirements references, of document. of in references,

referenced a way that document
(including ...



ISO 23237:2023

INTERNATIONAL STANDARD ISO 23237
First2023-11 Glass in building --
Laminated solar photovoltaic glass for
use in buildings -- Light transmittance
measurement method Verre dans ...



Contact Us

For catalog requests, pricing, or partnerships, please visit:
<https://espay.es>

