

Espay Solar Energy S.L.

465 solar panel size



Overview

This module is equipped with 2.0mm semi-hardened glass with anti-reflective coating and is part of the NEOSTAR Series. The Aiko 465Wp with 108 cells HC has a black anodized aluminum frame and a size of 1757x1134x30mm. Mono-glass modules in the second generation offer higher power output, lower BOS and better aesthetics. They also boast partial shading optimisation, better temperature. For wholesale pricing and availability contact your local Greentech Renewables or: Approvals Let us know what you're after through this form or by contacting a location near you and we'll promptly get you a quote with pricing and local availability. We'd love to work with you! Greentech Renewables. Shop at SunWatts. All our panels are UL Certified, have up to a 25 year manufacturers warranty and qualify for tax. There are 3 standardized sizes of solar panels, namely: 60-cell solar panels size. That's basically a 66x39 solar panel. But what is the wattage?

That is unfortunately not listed at all. 72-cell solar panel. The LonGi 465W Solar Panel (LR4-72HPH, 445-465 Watt) is designed for ground power plants and distributed projects, offering superior energy performance and long-term reliability.

465 solar panel size

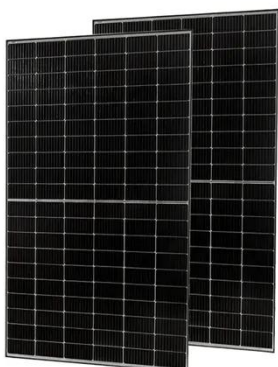


LonGi 465W Solar Panel (LR4-72HPH, 445-465 Watt) - TSolar

The LonGi 465W Solar Panel (LR4-72HPH, 445-465 Watt) is designed for ground power plants and distributed projects, offering superior energy performance and long-term reliability.

AIKO Solar Panel AIKO- A465-MAH54MW 465W ...

The AIKO AIKO-A465-MAH54MW is a 465W N-Type ABC Solar Panel from the ...



Solar Panel Size & Dimensions Guide 2025 , Complete Specs

In this comprehensive guide, you'll learn everything you need to know about solar panel sizing, from standard dimensions to weight considerations, helping you determine the perfect solar ...

Libra Energy

The AK-A465-MAH54Db-BK from Aiko Solar is a Gen2 Glass-Glass/All Black N-Type ABC solar panel and has a capacity of 465 Watt peak. This module is equipped with 2.0mm semi-hardened glass with ...



- Voltage range: 91.2-947.2V
- >6000 cycles (100%DOD)
- Rated battery capacity: 216KWH (customizable)
- EMS communication: 4G/CAN/RS485

CS6.2-48TD-465 Solar Panel Information (Canadian Solar Inc)

See the table below for available information we have about Canadian Solar Inc CS6.2-48TD-465 solar panels. We do our best to provide information such as the CS6.2-48TD-465 panel dimensions, ...

JA Solar 465W JAM72S20 465/MR Solar Panel

Panel dimensions: Length 2120mm Width 1052mm Height 40mm Weight 24,6kg. Ideal for both isolated and grid-connected solar photovoltaic installations. These panels stand out for their incredible value ...



Jinko Solar 465W 156 Half-Cell 1500V Silver Bifacial ...

Greentech Renewables supplies Jinko Solar 465W 156 Half-Cell 1500V Silver ...



AIKO Solar Panel AIKO-A465-MAH54MW 465W Neostar Black ...

The AIKO AIKO-A465-MAH54MW is a 465W N-Type ABC Solar Panel from the second generation of Neostar 2P Mono-Glass Modules. Mono-glass modules in the second generation offer higher power ...

Warranty
10 years

LiFePO₄

Intelligent BMS

Wide Temp:
-20°C to 55°C



Standard Solar Panel Sizes And Wattages (100W-500W Dimensions)

If you have a 1000 sq ft roof, and you can use 75% of that roof area for solar panels, you can theoretically put 45 300-watt solar panels on a 1000 sq ft roof. A typical 400-watt solar panel is 79.1 ...

465W Solar Panel Half-cell HJT Double Glass 23.79% Efficiency

Its elegant black frame and compact size

make it especially attractive for residential and C&I rooftop systems. Backed by a 30-year linear power output warranty, the UE465H-54HBD ensures lasting ...



Jinko Solar 465W 156 Half-Cell 1500V Silver Bifacial Solar Panel

Greentech Renewables supplies Jinko Solar 465W 156 Half-Cell 1500V Silver Bifacial Solar Panel, JKM465M-7RL3-TV and other pre-qualified solar equipment from Jinko Solar through our extensive ...

Contact Us

For catalog requests, pricing, or partnerships, please visit:
<https://espay.es>

